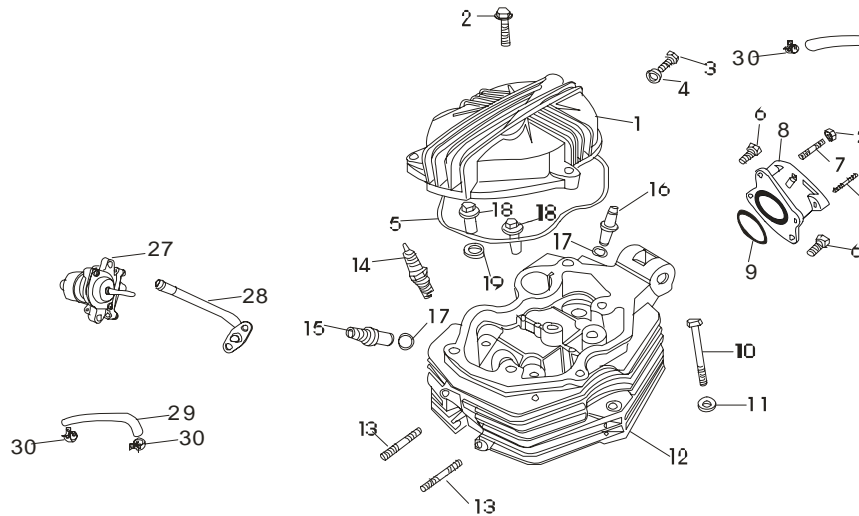


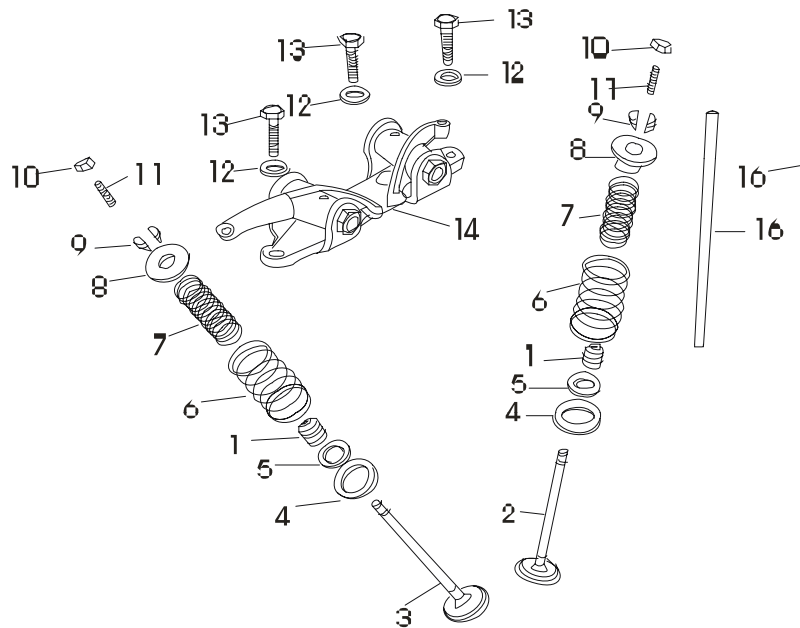
KINLON - DUAL SPORT/SUPER MOTARD SPARE PARTS ENGINE ONL



No.	Ref.	Description	Quantity
1	102231-I200-31001	CYLINDER HEAD COVER	1
2	SA0628-DL	BOLT M6*28	1
3	SB0612-DL	BOLT M6*12	1
4	T21900-061320	WASHER	1
5	102249-I200-00001	WASHER,CYLINDER COVER	1
6	SB0620-DL	BOLT M6*20	2
7	Z20616-ABZ	STUD	2
8	113611-J1AA-40002	INLET PIPE	2
9	T51150-300335	O-RING	1
10	T11218-208087	BOLT M8*87	1
11	T21841-081825	WASHER	1
12	102210-14AA-00003	CYLINDER HEAD	1
13	102229-T100-00001	STUD	4
14	305300-T100-10001	SPARK PLUG	1
15	102215-T200-00001	* GUIDE,EX.VALVE	1
16	102214-T200-00001	* GUIDE,IN VALVE	1
17	T51150-180100	* O-RING	2
18	102246-I200-00003	·BOLT M6*12	4
19	T22721-102005	·WASHER	4
20	102299-14A0-00001	·GASKET,CYLINDER	1
21	T41100-010200	·PIN	3
22	T51150-160100	·O-RING	1
23	SB0625-DL	·BOLT M6*25	2
24	102110-14A0-00009	·CYLINDER BODY COMP	1

25	102199-J200-00002	·CYLINDER GASKET	1
26	M10600-DL	·NUT	2
27		2ND VALVE , IN	1
28		METAL BREATHER PIPE , SUPPLEMENTA	1
29		INSULATOR RING	1
30		CLAMP	4
31		RUBBER BREATHER PIPE , SUPPLEMENT	1

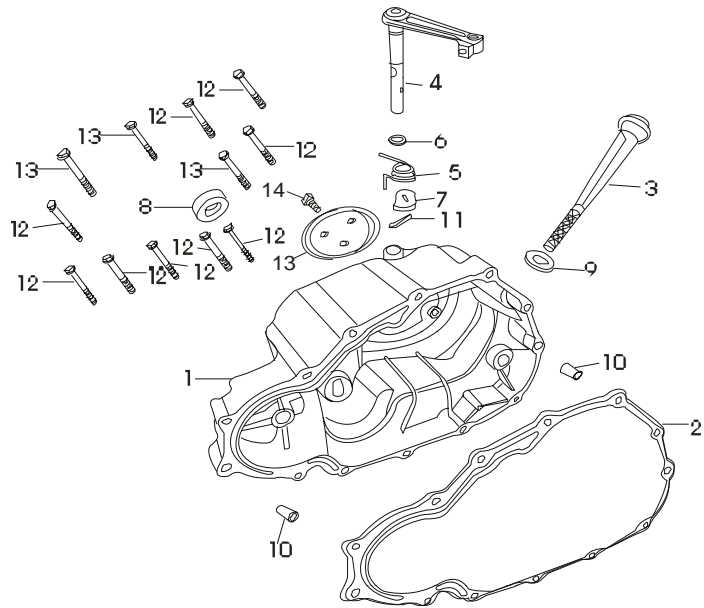
--



No.	Ref.	Description	Quantity
1	104399-I100-00001	·SEAL , VALVE STEM	2
2	104311-J200-00002	·INLET VALVE	1
3	104312-J200-00001	·OUTLET VALVE	1
4	104396-I100-00001	·OUTER,SPRING SEAT VALVE	2
5	104395-I100-00001	·INNER SPRING SEAT VALVE	2
6	104322-I200-00004	·OUTER SPRING	2
7	104321-I200-00004	·INNER SPRING	2
8	104397-I200-00001	·SPRING SEAT VALVE	2
9	104398-I200-00001	·LOCK PLATES	2
10	104414-I200-00001	·ADJUSTING NUT,VALVE CLEARANDE	2
11	104413-I200-00001	·ADJUSTING SCREW,VALVE CLEARANCE	2
12	T21104-081825	·WASHER	3
13	S60828-YH	·BOLT M8*28	3
14	104410-I200-00001	·ROCKER ARM COMP	1
15	104110-I200-00015	·CAM SHAFT COMP	1

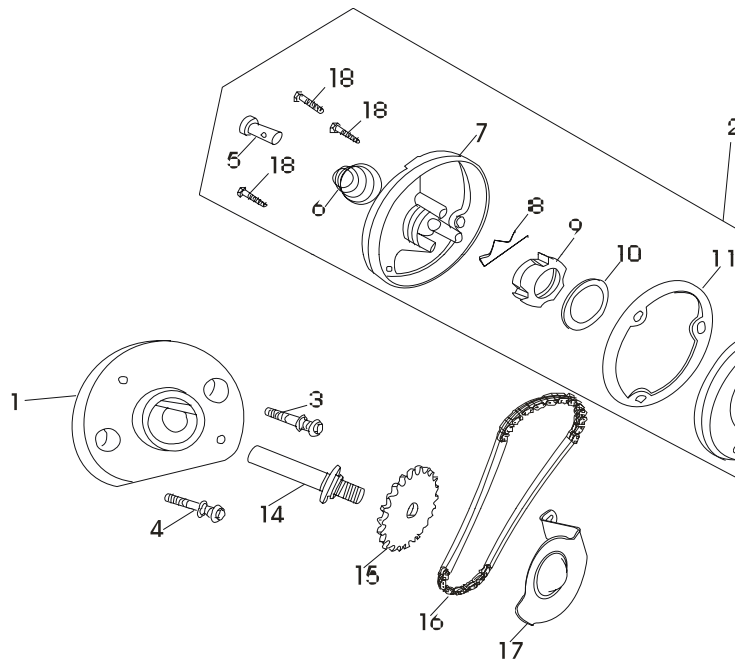
16	104150-14A0-00001	·PUSH LEVER COMP	2
17	102186-I200-00001	·WAVE WASHER	1
18	104430-I200-00001	·LOWER ROCKER	2
19	104439-I200-00001	·SHAFT,LOWER ROCKER	1
20	T51150-250170	·O-RING2.5*17	1
21	104113-I200-00001	·SPRING	1
22	T51150-250200	·O-RING2.5*20	1
23	104114-I200-00001	·SHAFT	1
24	T21904-122020	·THRUST WASHER12*20*2	1

E-3



No.	Ref.	Description	Quantity
1	101411-05A0-10005	·R.CRANKCASE COVER	1
2	101499-05A0-00001	·GASKET,R.CRANKCASE COVER	1
3	105301-I200-00003	·OIL-RULER	1
4	105310-I100-01001	·CLUTCH LEVER ASSY	1
5	106321-I100-00001	·SPRING	1
6	T51150-190068	·OIL SEAL 6.5*14.5*7	2
7	102232-G200-00002		1
8	T51150-300180	·OIL SEAL 16*28*7	1
9	T41100-008140	·CLUTCH SEPERATING CAM	1
10	101492-I100-00001	·O-RING	2
11	SB0640-DL	·POSITION PIN	12
12	SB0650-DL	·CIRCLIP	3
13	101412-I200-01009	·BOLT M4*40	1
14	D30610-DL	·BOLT M6*50	3

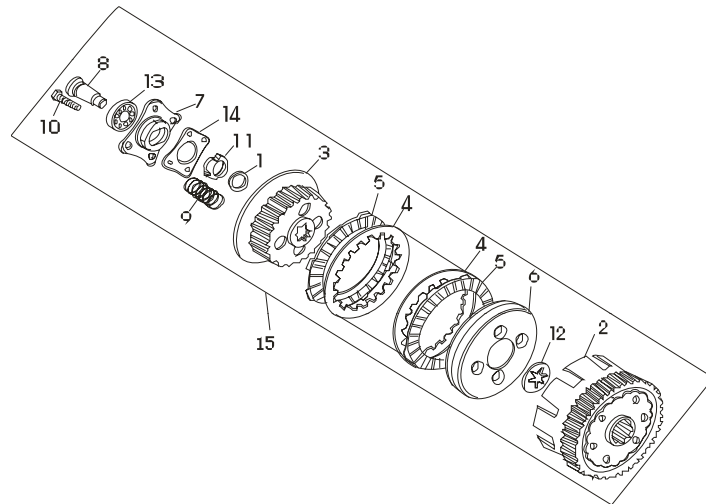
E-4
OIL PUMP & OIL FILTER COMP



No.	Ref.	Description	Quantity
1	105100-05AA-00001	·OIL PUMP ASSY	1
2	105200-05A0-00001	·OIL FILTER COMP	1
3	S60630-CZ	·BOLT M6*30	1
4	D30412-DL	·BOLT M4*12	1
5	D20512-BZ	·EX.OIL TUBE	1
6	105224-05A0-00001	·SPRING,EX.OIL TUBE	1
7	105225-I100-00001	·COVER,OIL FILTER	1
8	105223-I100-00001	·COTTER PIN	1
9	105228-I100-00001		1
10	106296-I100-00001	·O-NUT	1
11	T23822-162720	·GASKET,OIL FILTER	1
12	105226-I100-00001	·BODY,OIL FILTER	1
13	105221-I100-00001	·PRIMARY DRIVE GEAR	1
14	106101-05AA-00001	·SHAFT , OIL PUMP	1
15	105105-05A0-00001	·SPROCKET , OIL PUMP	1
16	105104-05A0-00001	·CHAIN, OIL PUMP	1
17	105180-05A0-00001	·COVER , OIL FILTER	1
18	105193-05A0-00001	·SCREW M5*12	3

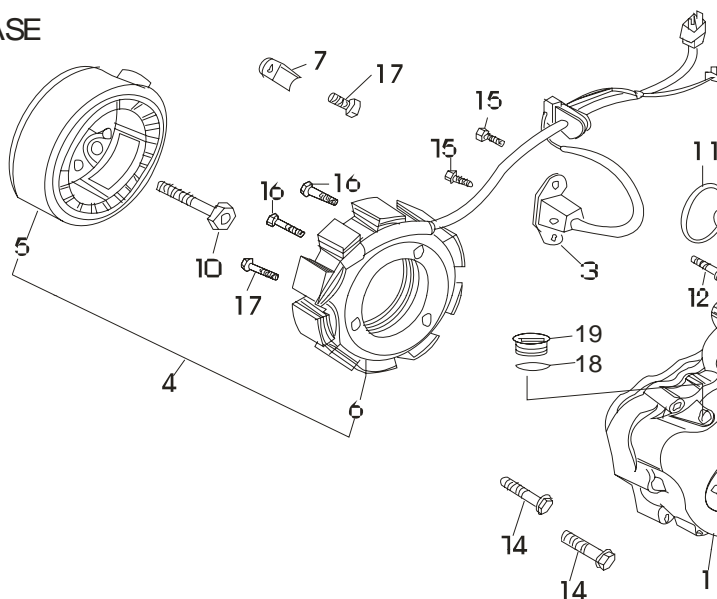
E-5

CLUTCH



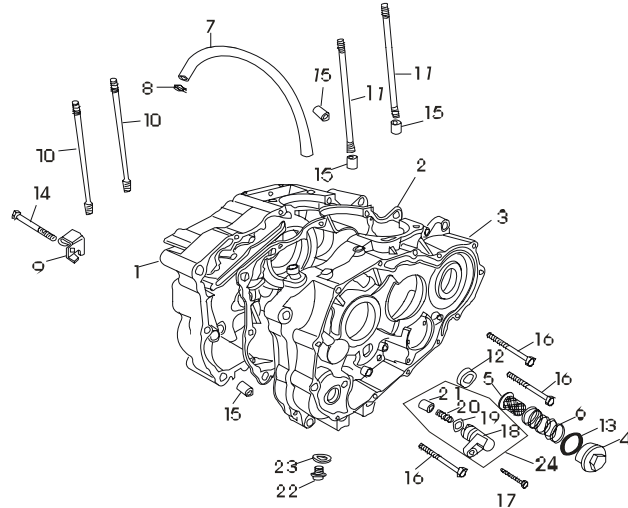
No.	Ref.	Description	Quantity
1	106295-I100-00001	·CLUTCH HOUSING COVER	1
2	106210-05AA-00001	·CLUTCH CENTER PIECE	1
3	106230-L2AK-00001	·FRICTION IRON PLATE	1
4	106234-L2AK-00001	·FRICTION IRON ASSY	5
5	106233-I100-00002	·PRESSING DISK,CLUTCH	4
6	106236-L2AK-00001	·CLUTCH SEPARATING PLATE	1
7	106236-I100-00001	·ASLE SLEEVE,SEPARATING	1
8	106299-I100-00001	·SPRING,CLUTCH	1
9	106237-L2AK-00001		4
10	S30622-BZ	·BOLT	4
11	106296-I100-00001	·NUT	1
12	T25221-203610	·SPLINE WASHER MAIN AXLE	1
13	CO-6003	·BEARING,CLUTCH COVER	1
14	106000-05AA-10003		1
15		·CLUTCH COMP	1

--
MAGNETO & COVER L CRANKCASE



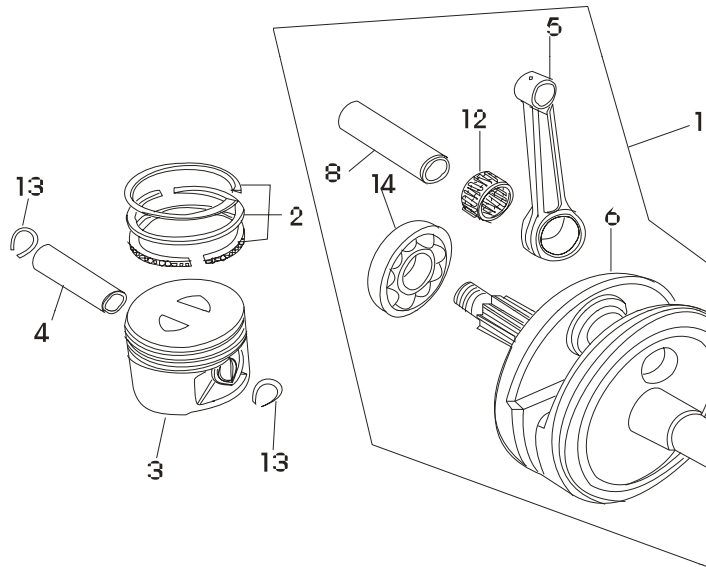
No.	Ref.	Description	Quantity
1	101311-I200-63001	·FRONTCOVER,L.CRANKCASE	1
2	101331-I200-F6003	·BACKCOVER,L.CRANKCASE	1
3	375220-I200-00001	* SENSOR	1
4	375100-I200-53003	·MAGNETO ASSY	1
5	375100-I200-18001	·FLY WHEEL	1
6	375200-I200-53003	·STATOR	1
7	101315-I100-00001	·TENSION DISC	1
8	101314-I200-20009	·REDUCTION GEAR COVER	1
9	101312-G2AB-20506	·COVER	1
10	103299-I200-00001	·BOLT M8*30	1
11	T51150-300630	·O-RING	1
12	SB0620-DL	·SCREW M5*16	3
13	SB0612-DL	·SCREW M5*20	4
14	SB0640-DL	·BOLT M6*35	6
15	SB0516-BZ	·SCREW M5*16	1
16	SB0525-DL	SCREW M5*25	3
17	S60610-YH	SCREW M6*10	1
18	T51110-250138		1
19	101313-F1AC-00010		1
20	T51110-24027		1

F-7
C RANKCASE ASSEMBLY



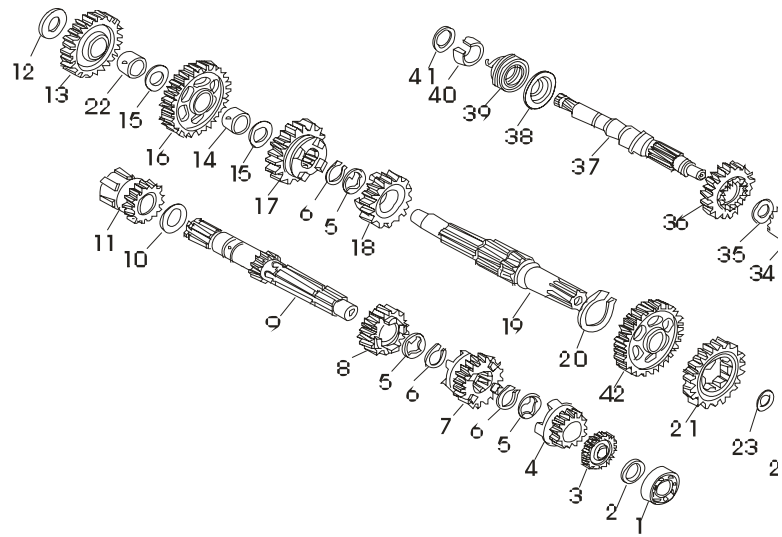
No.	Ref.	Description	Quantity
1	101210-05A0-10003	·R.CRANKCASE	1
2	101199-05A0-00001	·GASKET,CRANKCASE	1
3	101110-05A0-10003	·L.CRANKCASE	1
4	102294-I100-00006	·SCREW COVER	1
5	105211-I100-00002	·OIL FILTER ELEMENT	1
6	105212-I100-00001	·SPRING,OIL FILTER ELEMENT	1
7	105401-I100-10001	·BREATH PIPE	1
8	105403-I100-00001	·CLAMP	1
9	106399-05A0-00001	·CLUTCH CABLE STAND	1
10	101194-K100-00002	·STUD A	2
11	101193-K100-00002	·STUD B	2
12	108298-I100-00001	·OIL SEAL	1
13	T51150-300350	·O-RING	1
14	S20655-DL	·BOLT M6*60	1
15	T41100-010140	·POSITION PIN	4
16	SB0650-DL	·BOLT M6*50	10
17	S60625-BZ	·SCREW M6*25	1
18	104173-I200-00001	* PRESSING PIN	1
19	T51150-250130	·O-RING	1
20	104171-I200-00001	* SPRING	1
21	104172-I200-00001	* PIN	1
22	105099-F100-00003	·BOLT	1
23	T21900-122015	·SEALING WASHER	1
24	104170-I200-00001		1

E-Ø
 CRANKCASE PISTON



No.	Ref.	Description	Quantity
1		·CRANKSHAFT CONNECTING ROD COMP	1
2		·PISTON RING	1
3		·PISTON	1
4		·PISTON PIN	1
5		·CONNECTING ROD	1
6		* L.CRANKSHAFT	1
7		* R.CRANKSHAFT	1
8		·CRANK PIN	1
9		·CRANKSHAFT TIMING GEAR	1
10		·SEMI CIRCLAR KEY	1
11		·CRANKSHAFT ROLLING BEARING	1
12		·BOTTOM BEARING , CONNECTING ROD	1
13		·CIRCLIP , PISTON PIN	2
14			1

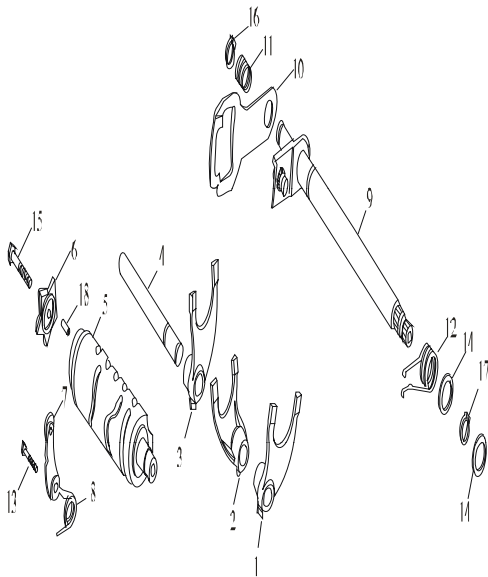
TRANSMISSION SPINDLE, KICK STARTER



No.	Ref.	Description	Quantity
1		BEARING	1
2		THRUST WASHER	1
3		DRIVING GEAR , 2ND	1
4		DRIVING GEAR , 5TH	1
5		CIRCLIP , GEARSHIFT PLATE	3
6		CIRCLIP	4
7		DRIVING GEAR , 4TH	1
8		DRIVING GEAR , 3RD	1
9		MAINSHAFT,TRANSMISSION	1
10		CIRCLIP	1
11		STARTING GEAR COMP	1
12		CIRCLIP	1
13		STARTING IDLE GEAR	1
14		BUSH , STARTING IDLE GEAR	1
15		THRUST WASHER	2
16		DRIVN GEAR , 1ST	1
17		·DRIVEN GEAR , 3RD	1
18		·DRIVEN GEAR , 4TH	1
19		·COUNTERSHAFT	1
20		·SPLINED CLAMP	1
21		·DRIVEN GEAR , 5TH	1
22			1
23		·WASHER	1
24		·BEAR	2
25		·OIL SEAL , COUNTERSHAFT	1

26	·DRIVING SPROCKET	2
27	·FIXTURE PLATE	1
28	·BOLT M6	1
29	·WASHER	1
30	·CIRCLIP	1
31	·RATCHET GUIDE PLATE	1
32	·RETAINER,KICK SPRING	1
33	·SPRING , RATCHET	1
34	·RATCHET,STARTER DRIVE	1
35	·THRUST WASHER	1
36	·STARTING GEAR	1
37	·SPINDLE,KICK STARTER	1
38	·SPRING SEAT	1
39	·RETURN SPRING , STARTOR	1
40	·SPRING BUSHING	1
41	·THRUST WASHER	1
42	·DRIVEN GEAR , 2ND	1

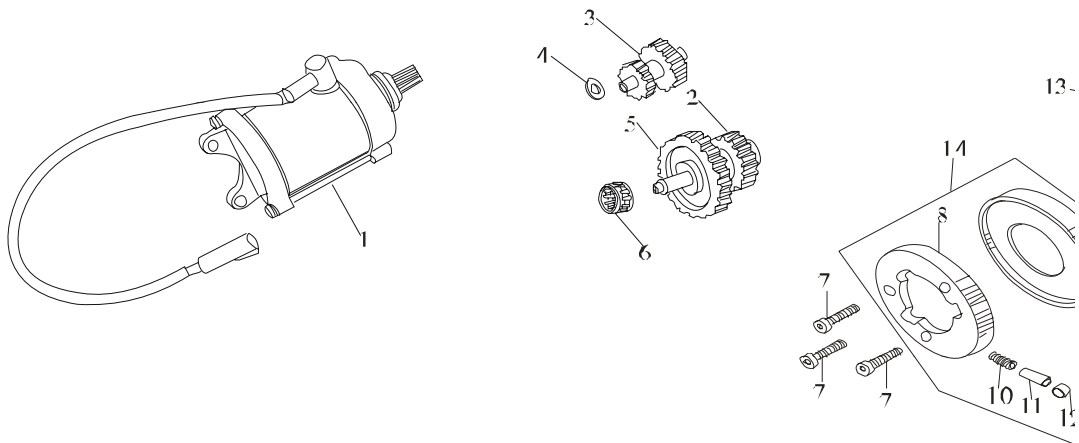
E-10 变速机构



No.	Ref.	Description	Quantity
1	108131-I100-00001	·FORK , 1	1
2	108132-I100-00001	·FORK , 2	1
3	108133-I100-00001	·FORK , 3	1
4	108134-I100-00002	·FORK , SHAFT	1
5	108111-I200-51001	·SHIFT DRUM	1
6	108121-I100-50001	·SHIFT CAM	1

7	108150-I100-00001	·STOPPER LEVER	1
8	108199-I100-10001	·THRUST SPRING	1
9	108210-I100-00002	·GEAR SHIFT	1
10	108214-I100-00001	·GEAR CHANGE PLATE	1
11	108235-I100-00001	·SPRING , GEAR CHANGE PLATE	1
12	108215-I100-00001	·RUTURN SPRING , GEAR SHIFT	1
13	S60622-YH	·BOLT M6*22	1
14	T22721-142005	·PUSH WASHER14*20*0.5	2
15	S60625-YH	·BOLT M6*25	1
16	A21200-YH	·CIRCLIP 12	1
17	A21400-YH	CIRCLIP 14	1
18	X20410	PIN B 4*10	1

F-12 起动机
STARTING MOTOR

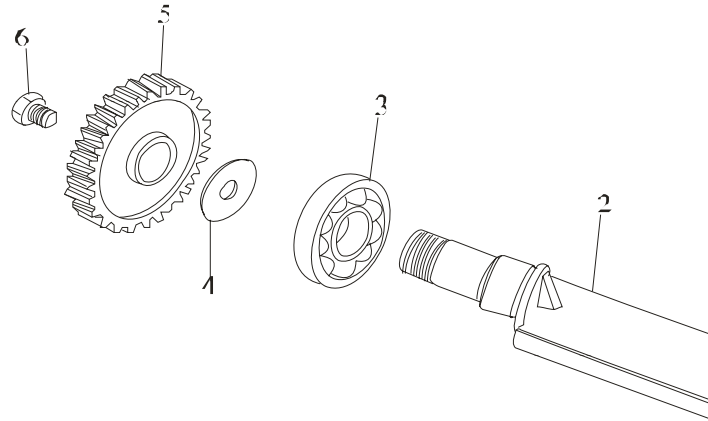


No.	Ref.	Description	Quantity
1	37600-14A0-00001	·STARTING MOTOR	1
2	109201-I200-00001	·GEAR,STARTING IDLE,BIG	1
3	109202-I200-00001	·GEAR,STARTING IDLE,SMALL	1
4	T22721-102005	·THRUST WASHER	1
5	109230-I200-00001	·SHAFT	1
6	C1-HK101410	·O-RING	2
7	D00616-YH	·SCREW M8*18	3
8	109111-I200-00001	·HOUSING , STARTING CLUTCH	1
9	109112-I200-00001	·SIDE COVER , STARTING CLUTCH	1
10	109198-I200-00001	·SPRING,STARTING CLUTCH ROLLERH	3
11	109199-I200-00001	·SPRING SLEEVE , STARTING CLUTCH	3
12	109197-I200-00001	·ROLLER , STARTING CLUTCH	3
13	109210-I200-00001	·GEAR STARTING CLUTCH	1

14 109110-I200-00001 ·STARTING CLUTCH ASSY

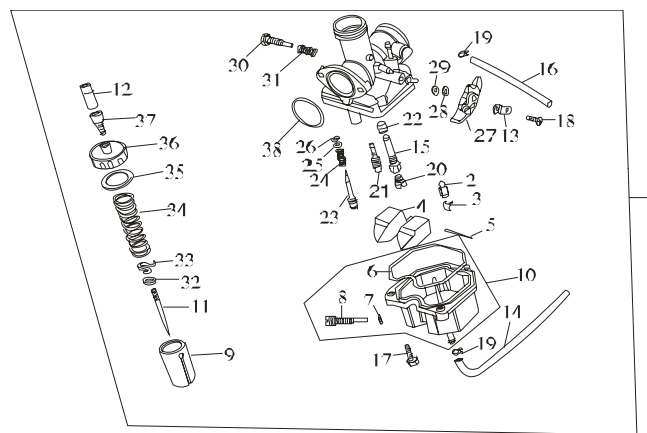
1

E-13 平衡轴
BALANCERSHAFT



No.	Ref.	Description	Quantity
1	CO-6203	BEARING,BALANCER SHAFT	1
2	103301-05A0-00001	SHAFT,BALANCER	1
3	CO-6204	BEARING,BALANCER SHAFT	1
4	103308-05A0-00001	PLATE, BREATHER	1
5	103320-05A0-00001	GEAR, BALANCER SHAFT	1
6	103309-05A0-00001	BOLT	1

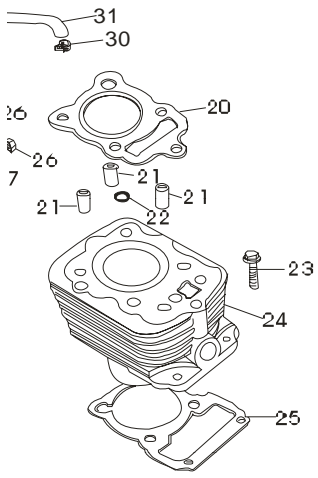
E-14 化油器
CARBURETOR

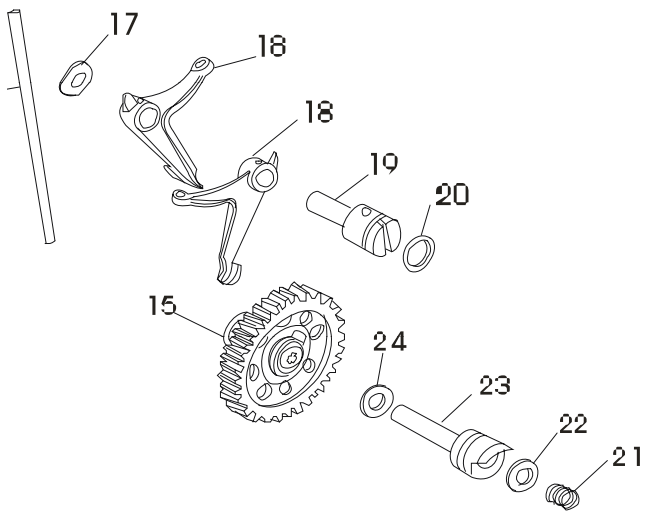


No.	Ref.	Description	Quantity
1		CARBURETTER	1

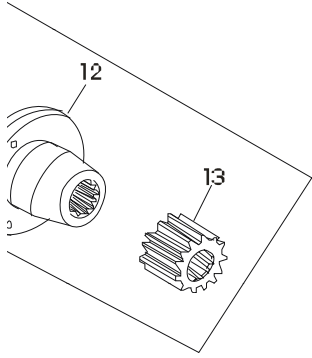
NOTE: spare parts marked “*” can not be offered separately.

.Y





2



2

